



To Be China's Leading Provider Of Access Intelligence Solutions



Shanghai Fastlink Door Co.,Ltd.

Tel.: 021-64601300-8018

After-sales Hotline: 400-880-6460

Email: sales@fastlinkchina.com

Official Website: www.fastlinkchina.com



TO BE CHINA'S LEADING PROVIDER OF ACCESS INTELLIGENCE SOLUTIONS

## SOLUTION OF COLD CHAIN LOADING & UNLOADING SYSTEM

[WWW.FASTLINKCHINA.COM](http://WWW.FASTLINKCHINA.COM)





# ABOUT FASTLINK

Shanghai FastLink Door Co., Limited, a national high-tech enterprise titled "Shanghai Famous Brand" , is an access intelligence solution provider and manufacturer of industrial doors and handling equipment. We independently develop and manufacture products including industrial sliding doors, single panel doors, PVC high speed doors, translational cold-storage high speed doors, loading and unloading levelers, door seals/shelters and industrial large fans, and have a number of technology patents and European CE certification.

Since its establishment in 2004, FastLink has already become a strong brand in the industry and won trust and recognition of customers in many industries and fields with excellent product quality and perfect service support. It maintains good partnership with well-known enterprises such as GLP, Vanke, ESR, Goodman, Mapletree, Forchn, Yupei, Ping An Real Estate, SinoTrans, Shenzhen International , JD.com, Cainiao, Suning, Vipshop, Bosch, Benz, BMW, Bayer, BASF, P&G, L'Oreal, Metro and RT Mart.

In 2010, FastLink built a modern factory of 20,000 square meters in Jiading, Shanghai, and introduced German technology and production lines, which laid a solid foundation for the company to become a leading industrial equipment manufacturer in China.

At present, FastLink has established a sales network and after-sales service system in more than 20 cities nationwide. Meanwhile, we have fully introduced ERP and CRM systems, and realized the "information system + cloud platform" by the technology of the Internet of Things, so as to comprehensively improve order fulfillment and service quality. With the international management mechanism, the design and development teams with "innovation as the first competitiveness" , and the service network integrating marketing, installation and after-sales service, FastLink is steadily growing into China's leading provider of access intelligence solutions.

# CONTENTS

01	Reasonable Planning & Right Products	P1
02	Ordinary Cold-storage Door & Fastlink Cold-Storage High Speed Door	P3
03	Energy-saving Calculation	P5
04	Cold-Storage High Speed Door	P6
05	PVC Thermal High Speed Door	P7
06	Cold-Storage Thermal Insulation Sliding Door	P8
07	Hydraulic Dock Leveler	P11
08	Telescopic Dock Leveler	P12
09	Unloading Room	P13
10	Mechanical Dock Shelters	P14
11	Sponge Dock Seals	P15
12	Inflatable Dock Seals	P16
13	Fastlink's Advantages	P17





REASONABLE PLANNING

MAKE COLD-STORAGE MORE  
ENERGY-SAVING, SAFE & EFFICIENT

Reducing Energy  
Consumption



During the operation of the cold-storage project, the potential energy loss may occur in every corner. On the dock leveler, the ordinary dock leveler is located under the insulation sectional door. The gap between the dock leveler and the foundation pit, the bottom of the dock leveler exposed to the outdoor, and the sealing problems between the refrigerated truck and the cold-storage during handling, etc. will lead to leakage of energy and then directly lead to an increase in costs. Inefficient ordinary cold-storage door is the main source of energy loss.

· Cooling off and energy saving are your primary considerations in the planning, design, construction and renovation of the cold-storage.

Environmental  
Control



In view of the particularity of the goods stored in the cold-storage, the invalid dock leveler seal is a very big problem for the cold-storage, not only causing energy loss, but also product damage, pollution, a decreasing level of food safety and employee comfort due to air convection and temperature changes.

· Solving the sealing problem of vehicles of different dimensions during cargo handling is also a key consideration in your planning.

Security



In the process of cargo loading and unloading, it is very important to ensure the safety of operators, goods, warehouse equipment and vehicles. In the busy handling area, internal and external personnel are mixed, insulation and sealing performance of the cold-storage are not good, and there is a large amount of water vapor condensation, resulting in slippery ground and dock leveler, as well as higher accident risks. After entering the cold-storage, there is also ice on the ground, and vehicles and personnel are more likely to be in danger.

· It is very important to ensure the safety of cold-storage operation by reasonable design, product selection and standard operation.

Efficient  
Operation



In order to reduce energy consumption of the cold-storage, it is required to automatically open and close the door every time the cold-storage is accessed, but the efficiency of the ordinary cold-storage door with slow opening and slow closing is very low, and the truck driver needs to stop and wait for the door to open, which affects the production efficiency. Besides, frequent failures may occur after a long period of use, and it is hard to be repaired in the case of accidental impact, which will directly affect the normal use of the cold-storage door, resulting in inefficiency.

· It is imminent to choose suitable high-speed, impact-resistant, low fault rate, durable cold-storage doors.

CHOSING RIGHT PRODUCTS



Solutions for Cold-storage



Translational Cold-Storage  
High Speed Door

Suitable for the kind of cold-storage which opens and closes frequently and has requirements for quick opening/closing and high thermal insulation. It can simultaneously satisfy the needs for quick opening/-closing and heat insulation, which is an ideal replacement of the ordinary cold-storage door.



Thermal  
High Speed Door

Fast automatic opening can effectively reduce air convection during handling and reduce energy consumption in places people come and go frequently. Suitable for constant temperature storage or renovation of old cold-storage.



Solutions for Unloading Bay



Insulated PU  
Sectional Door

Special structural design to prevent thermal conduction; high-density polyurethane to achieve high-efficiency thermal insulation; Heating window to ensure condensation and ensure a clear view.



Hydraulic  
Dock Leveler

Perfect sealing during handling; no matter what kind of trucks or buildings, there is always one that suits your needs.



Telescopic  
Dock Leveler

The 1,000mm-long clapper can be telescopically adjusted in a flexible way, and is better overlapped with the bottom plate of the vehicle, which effectively improve the leakproofness between the cold-storage and the outside world, thus achieving better insulation and preventing cold air leakage.



Mechanical  
Dock Shelters

Suitable for areas with low sealing requirements and different handling truck dimensions.



Sponge  
Dock Seals

It has a good sealing performance, which is suitable for same or similar types of handling trucks.



Inflatable  
Dock Seals

With good sealing performance suitable for a variety of models, it is the best choice for cold-storage unloading area.

COMMON HAZARDS OF  
ORDINARY COLD-STORAGE DOORS

- The cost of inefficient ordinary cold-storage door is much higher than people think.
- Slow-speed opening/closing directly affects the operation efficiency of the cold-storage, and causes huge energy loss every time the door is opened.
- Defrosting and deicing the cold-storage also costs a lot of time and labor.



Ordinary cold-storage doors tend to open and close slowly, and can not be used frequently. The door is basically open when goods enter and exit the cold-storage, and the temperature changes when hot air from outside enters the cold-storage. Continuous running of the refrigeration equipment will increase the electricity cost.



Due to long-time opening of cold storage doors, the hot air outside gets into the warehouse and destroys the cold-storage environment, resulting in uneven temperature in the warehouse, and temperature changes will affect the quality of stored products, especially temperature-sensitive food.



The ordinary cold-storage door is easy to be hit or bumped by forklift during cargo handling. Once the rigid insulation door panel is bumped, it is easy to be irreparably deformed, resulting in air leakage, high maintenance cost, difficult replacement and big energy loss during repair.



If the door of the cold-storage is opened for a long time, the air leakage from the cold-storage will reduce the ground humidity and cause the condensation of water vapor, which will be brought into the cold-storage by vehicles or personnel and become ice, thus causing safety hazards.



If the door of the cold-storage is opened for a long time, the hot air outside enters the storage, and the water vapour can damage the refrigeration equipment easily. At the same time, water vapor condenses on the evaporator and the condensation pipeline, resulting in icing, reducing the refrigeration efficiency and increasing the energy consumption.



If the door of the cold-storage is opened for a long time, the hot air outside enters the cold-storage and causes ice on the roof of the cold-storage and the surface of refrigeration equipment. It takes a lot of time and labor to clear the ice.

FASTLINK TRANSLATIONAL COLD-STORAGE  
HIGH SPEED DOOR'S NEW EXPERIENCES



Increasing Work Efficiency

The opening speed is as high as 2.5 m/s, which is more than four times of that of ordinary cold-storage doors. It greatly improves the efficiency of cold-storage logistics, reduces the operation cost and enhances the competitiveness of the enterprise.



Saving Electricity & Reducing Operation Cost

The high-speed operation of the cold-storage door can save the energy loss caused by air convection, reduce the refrigeration power consumption, and save energy costs of nearly RMB70,000 per door per year for users.



Suitable for Frequent Use

It has a design life up to 2 million times, suitable for high-frequency daily use, with a long service life and low after-sales costs.



High Thermal Insulation

The interior of the door panel is made of EVA insulation material, and the R value of a 100mm thick door panel is 17. A single door can fully guarantee the cold environment of the cold-storage.



Maintenance-free

Thanks to the non-traditional rigid panel, the PVC surface layer, the flexible EVA thermal insulation core material and the thermoplastic molding process, the door can resist the impact of big external force, and can be automatically reset after being impacted by a forklift, thus reducing the maintenance cost and long-term energy loss during the repair.



ENERGY-SAVING CALCULATION

Take the door rebuilding project of a cold-storage with the ammonia refrigeration system as an example >>>

The temperature inside the cold-storage is -18°C. The temperature outside the cold-storage is 10°C. The relative humidity inside and outside the cold-storage is 26% and 60% respectively. The door of the cold-storage is opened and closed 15 times an hour, working 24 hours a day and 365 days a year; An ordinary stainless steel sliding door is used before the rebuilding. The door was impacted, the sealing performance was very poor, and it was suffering from serious frost damage. The anti-freezing heating system worked continuously for 24 hours. After the rebuilding, the high-speed cold-storage sliding door is used. Let's compare the energy loss before and after the modification:

	Ordinary Stainless Steel Translational Door (before Rebuilding)	Translational Cold-Storage High Speed Door (after Rebuilding)
Cold-storage Door Dimensions (mm)	3000×3000mm	3000×3000mm
Thermal Resistance of Door Panel	10	17
Opening/Closing Speed (m/s)	0.53m/s	2.0m/s
Delay Closing Time of Single Opening Time (s)	20	4
Total Single Opening Time (s)	31	7
Percentage of Opening Hours (%)	13.02%	2.9%
Annual Cooling Power Consumption (KWh/y) * Due To Air Convection	69116.22	15378.98
Annual Cooling Power Consumption (KWh/y) * Due To Conduction	392	231
Annual Cooling Power Consumption (KWh/y) * Due To Penetration	12916.26	0
Annual Cooling Power Consumption (KWh/y) * Due To Electric Heating System	1310.40	393.12
Total Annual Cooling Power Consumption (KWh/y)	83734.75	16001.61

The test data show that the rebuilding of a cold-storage door can **save the power consumption of 67,733.14 degrees per year**, a decrease of 80%. The energy loss caused by air convection accounts for 82.5% of the annual energy consumption, the largest proportion, and reducing the energy consumption of this part is the most effective way. Therefore, it is the best solution to increase the opening and closing speed of the door and reduce the opening time.



HIGH-SPEED, THERMAL INSULATION MAINTENANCE-FREE

TRANSLATIONAL COLD-STORAGE HIGH SPEED DOOR

- The opening speed can reach 2.5m/s, which greatly reduces the opening time and the convection of hot and cold air compared with other cold storage doors, realizes minimum energy loss and effectively improves work efficiency.
- The flexible door panel design can resist the impact of strong external force and realize automatic reset afterwards. It is maintenance-free and durable.
- The unique sealing device between the door panel and the opening and the adjustable sealing design at the bottom of the door can ensure high sealing performance surrounding the door body and satisfy the strict cold storage application environment.
- **Typical application industries:** food, medicine, cold storage, etc., with the single door used for low-temperature cold storage.

Optional Requirements	Specifications
Door size	Minimum dimension W3000/H5600 Maximum dimension W4000/H5300
Door opening/closing speed	Maximum opening speed 2.5m/s
R value	Door panel thickness 100mm, R value 17 Door panel thickness 150mm, R value 25
Door panel material	The third generation of waterproof insulation material FDA certified food grade thermoplastic door shell
Door panel style	Single door Double door
Installation position	Inside and outside the cold storage
Open configuration (optional)	Remote control/3-key button/geomagnetic/radar/pull-cord switch
Service life	More than 2 million times
Operating ambient temperature	-25°C ~ 15°C





PVC THERMAL  
HIGH SPEED DOOR

THERMAL INSULATION  
SAFE & EFFICIENT



HEAT PRESERVATION  
INSULATION & SEALING

COLD-STORAGE THERMAL  
INSULATION SLIDING DOOR

- PVC thermal high speed door is designed with the insulated curtain, which has certain insulation function. It can be used in a low-temperature environment to reduce energy loss, preserve heat, prevent fog and reduce air condensation when the air cools.
- The innovative soft bottom edge design with anti-collision reset function can avoid accidents, which greatly reduces the door curtain damage caused by accidental collision, and reduces the maintenance cost.
- It is used in combination with ordinary translational cold-storage doors in low temperature environment requiring frequent and quick opening.
- **Typical application industries:** food, medicine, cold storage, etc.

>>> TECHNICAL PARAMETERS

Optional Requirements	Specifications
Door size	Minimum dimension W2000/H2000 Maximum dimension W3000/H3000
Door opening/closing speed	Minimum closing speed 0.8m/s Maximum opening speed 1.5m/s
Door panel material	0.8mm PVC door curtain Yellow, orange and blue are optional
Combined door frame	Optional
Motor cover	Optional
Scroll cover	Optional
Installation position	Outside the cold storage
Open configuration (optional)	Remote control/3-key button/geomagnetic/radar/pull-cord switch
Service life	More than 1 million times
Operating ambient temperature	-10℃ ~ +40℃

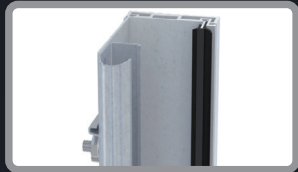
- The insulation sectional door of the cold-storage is generally used in the low temperature hall area of 0-10℃, which is different from the normal temperature environment. It needs to ensure that during the use, there is no condensation on the door panel surface, no water on the ground and no rusty components.
- The door panel is made of aluminum-magnesium alloy, the pulley seat is made of aluminum alloy, and the torsional spring has an electrophoretic coating on the surface, which is not easy to rust, and is very suitable for humid and low-temperature environment.
- Aiming at the fogging and blurring problem of ordinary windows in cold-storage, the special electric heating glass window design can keep the windows clean and transparent all the time.
- During the installation of products, the thermal baffle can effectively improve the condensation and water accumulation on the floor after the cold bridge is generated when the track is directly fixed with the cold-storage board.

>>> TECHNICAL PARAMETERS

Optional Requirements	Specifications
Door size	Minimum dimension W1500/H2000 Maximum dimension W5000/H6000
Door opening/closing speed	0.2m/s
Door panel material	Polyurethane foaming Ash, silver ash, window ash (optional)
Installation position	Interior
Door frame combination	Optional
Open configuration (optional)	Remote control/3-key button/geomagnetic/radar/pull-cord switch
Service life	More than 1 million times
Operating ambient temperature	0℃~25℃



**MORE PRODUCT DETAILS  
FOR HUMID ENVIRONMENT OF COLD-STORAGE**



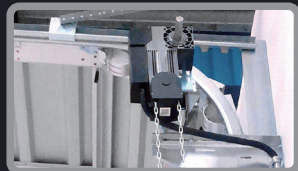
**Track Thermal Baffle**

The sectional door track of a cold-storage is equipped with a thermal baffle to prevent the generation of the cold bridge when it is fixed, and the sealing rubber strip is further embedded on the thermal baffle to improve the sealing effect of the door.



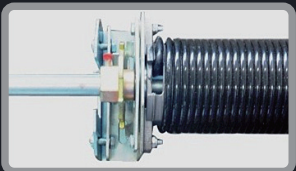
**Closed Track Design**

It is safer with hand protection. The track and the sub-track are detachably connected, which makes replacement easier and maintenance costs lower.



**Handleless Design**

In case of power failure, manual chain is used to open the door, and manual box handle is no longer needed to be added to the door panel, which means no more cold bridge and dew condensation.



**Torsional Spring Electrochromic Coating**

The torsional spring is made of alloy spring steel and its surface is treated with shot peening. The coating is more resistant to corrosion. It is very suitable for the cold environment of the cold-storage and is not easy to rust.



**Aluminum Alloy Pulley Seat**

The aluminum alloy pulley seat is used to connect the door panel. It is a patent design of FASTLINK which realizes multi-angle adjustment and ensures that the door panel is always in the best sealing state.



**Electric Heating Window**

The insulating glass window with the electric heating system used in the cold-storage will always be clean, transparent and fog-free.



**IMPROVING HANDLING EFFICIENCY  
TO MAKE THE WORK BE DONE AT ONE TIME**

**DOCK LEVELERS**

The dock levelers can effectively adjust the height difference between the bottom plate of different transport vehicles and the platform, and form a transitional slab between the rear of the vehicle and the platform, so that the handling process can be completed once, avoiding the possible accidental damage and unnecessary risks of vertical handling.

It can realize the safe and fast handling process and improve the efficiency of logistics handling.

The dock leveler can be divided into two types: the plate-turning type and the telescopic type. For such places with high requirements for sealing performance and insulation performance as a cold-storage, in order to avoid the convection of hot and cold air inside and outside the warehouse, the plate-turning dock leveler needs special treatment, and the telescopic platform is undoubtedly the best solution.

▲ The dock leveler of the cold-storage unloading bay is installed under the insulation sectional door, and the platform clapper is exposed outside the cold-storage. Any opening or gap will cause the convection of cold and hot air inside and outside the warehouse. If it is not treated, it will directly affect the temperature of the cold-storage hall, causing a lot of energy loss.

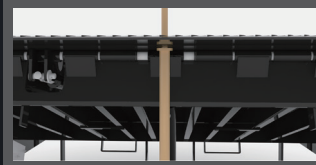




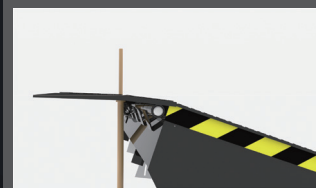
## HYDRAULIC DOCK LEVELER

**EASY & EFFICIENT  
HANDLING EQUIPMENT**

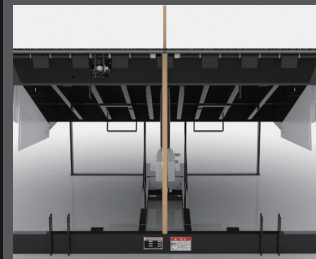
### Safety Details



The structure of the platform is reinforced by 8-10 C-type section steel reinforcement bars to maintain elasticity of the platform and achieve optimum support.



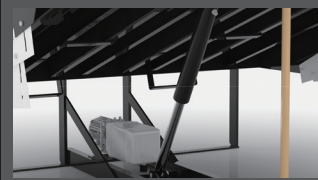
The clapper adopts the double 5-degree arch design, which can increase the overlapping area of clapper and carriage, make the transition smoother, and avoid jolting when forklifts truck pass by



The through-type maintenance support bar can effectively support the platform and the clapper to resist the impact from the front and side. The support point is in the middle of the clapper. The penetrating design enhances safety & anti-collision performance.



Integral hydraulic power unit imported from Europe.



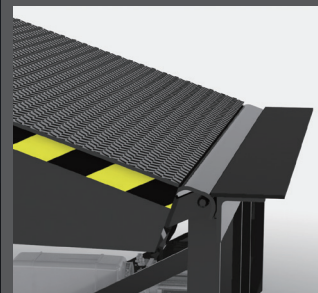
The special inverted design of the oil cylinder can effectively prevent the oil cylinder seal ring from leakage and the safety lock valve from failing due to dust deposition.



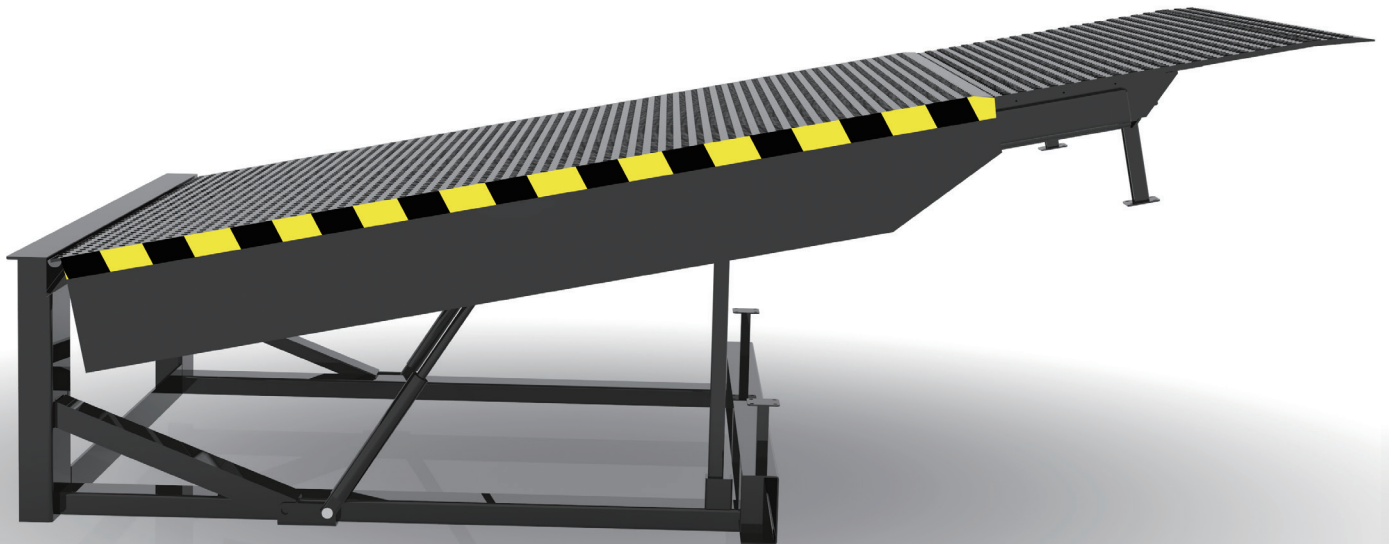
The closed tubular hinge is designed to increase the contact area with the pin shaft so that it can bear the force more evenly. The tubular hinge can be lubricated with grease to ensure the flexible opening of the clapper.



Foot baffle in full working range to ensure operators' foot safety.



The patented arc transition design at the rear ensures that the platform is in an effective contact with the forklift tires within different height adjustment ranges, thus reducing the jolting of forklifts, occurrences of occupational diseases of the forklift drivers and the damage to the goods caused by jolting.



## TELESCOPIC DOCK LEVELER

**USED IN SEALED &  
HEAT-PRESERVATION ENVIRONMENTS**

### Full-Sealing Design of Unloading Bay

Sealing performance is the key point of cold-storage unloading bay design. The telescopic platform is installed on the inner side of the sectional door of the cold-storage, and directly falls to the bottom of the foundation pit after the door is closed, which stops air convection between the indoor and outdoor, thus realizing the full sealing design of the unloading bay and reducing the energy loss.

### Design Concept of Whole Cold Chain

For customers who require more stringent requirements and realize the whole cold chain, through the special foundation pit design, the refrigerated car can be parked first, and then the door of the refrigerated car can be opened from the indoor side to minimize the impact on the temperature inside the refrigerated car.

### Flexible Telescopic Adjustment

The telescopic platform can be installed inside the unloading bay door of the cold-storage, and the telescopic adjustment amount up to 1,000mm can also ensure the normal use of handling goods.



Indoor Installation Effect



Outdoor Installation Effect





## UNLOADING ROOM

**COLD-BREAKING, ENERGY-SAVING  
& SPACE-SAVING SOLUTION**

- For the spacious area of outdoor parking space, the unloading room is also an option for cold-breaking design. The unloading room is installed on the outside of the insulation sectional door of the cold-storage, which can save precious space inside the cold-storage. The utility model comprises a handling room, a dock leveler, door seals and the like. After the sectional door is closed, the convection of indoor and outdoor air can be cut off, and the hole can be sealed better.
- The dimensions of the unloading room should be designed according to the dimensions of the door opening and the unloading platform. The strength is calculated by static load. Generally, the modular structure is convenient for assembly and transportation, as well as for on-site installation.
- The unloading room generally adopts 42/50/75mm thick polyurethane plates, including the bottom frame of the unloading room, and can also be insulated according to customer requirements.

**FOR THE SEALED ENVIRONMENT  
WITH MORE TRUCK TYPES**

## MECHANICAL DOCK SHELTERS

### Saving Energy

It has a good sealing effect on the space between the vehicle and the warehouse. It is windproof, rainproof, dustproof, and blocks the air flow, and also improves the working environment and helps energy saving and operation in the warehouse.

### Frame Structure

The door shelter is composed of front frame, rear frame and connecting arm. The whole frame is treated with hot galvanization for corrosion resistance, and the surface is fixed and decorated with aluminum alloy profile which is anodized for an elegant appearance.

### Curtain Quality

The curtain is made of neoprene fiber or polyethylene fiber cloth and coated with PVC.  
Tensile Strength: 9,800/8,300 (N/5cm)  
Tear-Resistance Strength: 1,700/1,500 (N)

### Bottom Door Mat

The bottom door mat ensures that the door shelter and door curtain are vertical while ensuring better sealing performance.

### Steel Protection Device

In order to protect the handled goods and the door shelter from collision from the handling process, as well as reduce maintenance, the steel protection device is added.

### Telescopic Frame Design

The frame is hinged to allow backlog and provides the necessary flexibility when approaching the vehicle.

### Top Drainage System

The top of the door shelter frame is inclined to facilitate top drainage.

### Sturdy Frame Structure

Effectively prevent side frames from spreading out under high pressure.

### Multiple Specifications & Dimensions

**Door shelters can be designed into a variety of specifications and dimensions suitable for various models of heavy trucks of various tonnages**

Standard Heights: 3,200mm, 3,400mm, 3,600mm  
Standard Widths: 3,200mm, 3,400mm, 3,600mm

Top Hanging Curtain Lengths: 1,000mm, 850mm  
Side Hanging Curtain Width: 600mm

Side depth: 600mm





## SPONGE DOCK SEALS

**BEST CHOICE FOR TRUCKS  
WITH UNIFORM SIZE**

### Strictly Sealed Environment

High performance sponge with maximum compression density up to 70%.

### Enhanced High-Quality Performance

The fabric fixed with screws and metal buttonholes always ensures an even air spillage.

### Better Security Assurance

Effectively reduces energy consumption while ensuring personal and property safety.

### Less Pressure and Friction

Unique pressure relief design can effectively reduce the friction between the door seal and the truck, and prolong the service life of the door seal.

### Wearproof Shutter

Distributed on both sides and above to provide additional wear protection and effectively extend the service life of the door seal.

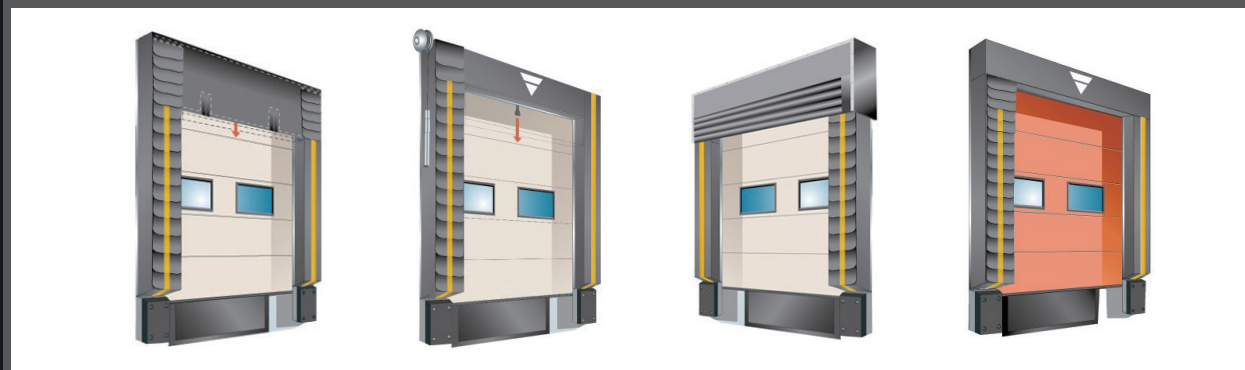
### Plated Steel Plate Gasket

Eliminates the potential problems of distortion, perishability and susceptibility to corrosion that wooden liners may encounter in the past.

### Guide Bar

Yellow guide bars with reflective properties provide better safety.

**Different top designs are available for different truck heights, such as: fixed, adjustable, hanging curtain, airbag, etc.**



**FOR LOADING&UNLOADING ENVIRONMENTS  
OF HIGH ENERGY CONSUMPTION**

## INFLATABLE DOCK SEALS

### Easy Operation

After the vehicle stops, the electric switch is turned on, and the inflatable door seals blower starts to inflate to seal the gap between the three sides of the carriage and the opening completely. The surface material of the door seal is soft and will not damage the surface of the vehicle. The blower needs to continue working during operation to ensure the pressure for airbag, so that a certain wind resistant performance is there.

After completing the operation process, the blower switch is turned off, the airbag is automatically deflated through the vent holes, and the airbag is automatically retracted by the built-in balance weight.

### Wide Range of Application

The width adjustment range is up to 1,000mm and the height adjustment range is up to 1,000mm, which is suitable for the height of various truck chassis.

### Low Maintenance Requirements

The surface material of the inflatable door seals is high-quality neoprene rubber with high wear resistance and flexibility. The black color material leads to a service life of no less than 30,000 times.

### Effective Operation

It adopts a large air volume fan with a voltage of 220V and is installed outdoors to meet the needs of application during extreme weather (-30°C-+60°C).

### Signal Light

The clearly visible signal light system directs the truck and forklift drivers to operate in an orderly and safe manner.





FASTLINK'S  
ADVANTAGES



WE PROMISE TO  
PROVIDE MORE DURABLE SECURITY

✔ **Fastlink After-sales Advantage**

**Security Provision** Professional team, original accessories, liability tracing system

**Quick Response** Far above the industry level

**Scientific Data Management System** Any maintenance data is traceable, and we strives to continuously optimize our service capabilities

**More Economical Maintenance Package** Cover all consumable replacement and maintenance items

✔ **Providing Third-party Additional Protection**

Fastlink has purchased third-party insurance for each product and for each on-site after-sales staff, providing you with double protection and removing worries for you.

**Product Accident Insurance**

At the customer's site, any property loss or personal injury caused by Fastlink products shall be settled by the third party insurance.

**Personal Accident Insurance**

Any personal injury accident caused by the employees of Fastlink shall be settled by the third party insurance during the on-site work of the customers.

✔ **Providing Maintenance Packages Of Different Specifications After The Warranty Period**

SERVICE

Compared with the layout of the sales network, FastLink attaches more importance to the fulfillment and delivery of orders and the after-sales guarantee of products.

Since the establishment of the company, we have passed on the after-sales service gene, and the three service teams have been constantly expanding the localization to achieve the service guarantee of rapid response.

FastLink has nationwide distribution of

Project  
Management Team

Installation  
Team

After-sales  
Service Team

- Shanghai
- Kunshan
- Suzhou
- Changzhou
- Zhejiang
- Hefei
- Wuhan
- Shenyang
- Tianjin
- Shandong
- Beijing
- Hebei
- Zhengzhou
- Xi'an
- Chengdu
- Chongqing
- Guiyang
- Guangzhou





## ERP

FastLink takes the lead in investing resources to establish an intelligent service management platform, and continuously launches service functions such as efficient inquiry of orders for customers and one-click report for repair and customer evaluation on the mobile phone, so as to realize end-to-end service that starts with customer demand and ends with customer satisfaction.



## TECHNICAL SERVICE

FastLink initiates the world's first Internet of Things Control Box (national invention patent), realizing system interconnection and turning passive service into active service.



### 1 Customer Service Terminal / QR Code Repair Report

Customers can scan the QR code with the mobile phone to quickly report for repair, inquire the contact information of the assigned after-sales engineer, and check the whole service process in real time.

FastLink distributes task orders on APP to the nearest after-sales service engineers, realizing data management from the assigning to the completion of the repair. Customers can evaluate the service on the mobile phone, which always reflects the business philosophy of customer first.

### 2 Cloud Platform

The cloud platform can display the usage status of warehouse products in real time (running times, fault information, real-time uploading).

Authorized customers can check the usage of all projects in the country from the system, and accurate data analysis for equipment repair and maintenance are provided to customers.

The system can connect with the customer park management system and realize the management goal of an intelligent park.